



Powering Business Worldwide

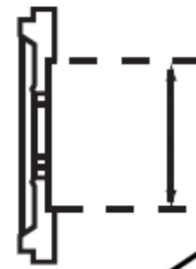
# Fuller® Heavy-Duty Clutch Selector

## Roadranger®

More time on the road®

**1** Choose size of your cast two-plate heavy-duty clutch.  
**Note:** All spline diameters are 2".

**2** Determine fly wheel bore opening and select number of springs.



**3** Choose clutch torque. Rating in chart must be equal to or exceed torque rating.

### Cover Type Key

AF = Adjustment-Free

AFG = Adjustment-Free Greaseable Bearing

MG = Manual Adjust w/ Greaseable Bearing

15.5 Inch	Spline Diameter and No. of Splines	Flywheel Bore Opening	Number of Springs	Clutch Torque (must exceed engine torque)	Disc Type	Facing	Cover Load	Weight Each	New			New with Predamper Option (to address neutral idle rattle)			Remanufactured		ValueLine™			
									Easy-Pedal™ w/o Brake MG	Solo® Standard Yoke AFG	Solo® XL Roller Yoke AFG	Easy-Pedal™ w/o Brake MG	Solo® Standard Yoke AFG	Solo® XL Roller Yoke AFG	Solo® AFG	Easy-Pedal™ New Int Plate MG	ValueClutch™ MG			
2" - 10	7"	8	8	1070	DOF-CO-FT	Organic	3200	150									107091-83B			
				1250	DOF-CO-FT	Organic	3600	150	108391-77									107091-77B		
				1400	DCF-CO-FT	Organic	4	3200	150										107091-80B	
							4	3600	150	108391-81						108391-82MO	107091-81B			
					DOF-CO-FT	Organic	4000	150	108391-82							108391-82MO				
				8.5"	10	1450	DOF-CO-FT	Organic	4000	150	108391-78									
	1650	DCF-CO-FT	4			3600	150	108391-74	109701-74					109700-74MO	108391-74MO	107091-74B				
	1860	DCF-CO-FT	6			4000	150	108391-93												
	10"	9 (Mack and Volvo 11L & 13L)	10	1650	DCF-CO	4	3600	150	108935-51*	109700-51*					109700-61MO*	108935-61MO*	107935-51B*			
				1760	DCF-CO	4	3600	150	108935-61*	109700-61*					109700-61MO*	108935-61MO*				
				1700	DCF-FT	4	3600	150	108925-14	109701-14		108925-34	109701-34	109705-34Y						
		7 (Mercedes)	7	7	1700	DCF	Organic	4000	150	108925-82	109701-82	109705-82Y	108925-34	109701-34	109705-34Y	109700-82MO**	108935-82MO**			
										6	3600	150	108925-85	109701-85		108925-30	109701-30	109705-30Y		
										4	3600	150	108935-82*					109700-82MO**	108935-82MO**	
			DCF-VCTplus	4	3600	150	108925-24	109701-24	109705-24	108925-34	109701-34	109705-34Y								
			DCF-VCTplus	6	4000	150	108925-20	109701-20	109705-20Y	108925-30	109701-30	109705-30Y	109700-20MO**							
			DCF-VCTplus	6	4000	150	108925-25	109701-25	109705-25Y	108925-35	109701-35	109705-35Y								
	2" - 14	10"	7	2250	DCF-VCTplus	6	4000	150	108009-32Y	109708-32	109706-32Y	108009-42Y	109708-42	109706-42Y						

14 Inch	Spline Diameter and No. of Splines	Flywheel Bore Opening	Number of Springs	Clutch Torque (must exceed engine torque)	Disc Type	Facing	Cover Load	Weight Each	Easy-Pedal™ w/o Brake MG	Solo® Standard Yoke AFG	Solo® XL Roller Yoke AFG	Easy-Pedal™ w/o Brake AFG	Solo® Standard Yoke AFG	Solo® XL Roller Yoke MG	Solo® AFG	Easy-Pedal™ New Int Plate MG	ValueClutch™ MG		
2" - 10	7"	8	None	1000	ROF	Organic	3200	110									107034-30B		
			8	1000	DCF-CO-FT	3	2800	110	108034-61B									108034-61MO	107034-61B
				1150	DOF-CO-FT	Organic	3200	110		N/A	N/A	N/A	N/A	N/A				108034-82MO	107034-57B
				1400	DOF-CO-FT	Organic	3600	110	108034-82B										
				1400	DCF-CO-FT-SD	4	3200	110	108050-59B										108050-59MO

\*Dual Zerk – Mack engines and Volvo 11 & 13 Liter engines 2007 or newer

\*\*Dual Zerk

NOTE: VCT 6-Spring design replaced by VCT Plus 7-Spring design.

**4** Narrow clutch choice based on options. All part numbers in row meet your specs.

Disc Type: **D** **CF** **CO**

**D** = Dampened

**CF** = Ceramic Facing

**OF** = Organic Facing

**CO** = Coaxial

**FT** = Free Travel

**SD** = Super Duty

**VCT** = Vibration Control Technology

**5** Choose from new or remanufactured.

**New:**

- Longer Service Life
- Less Downtime

**Remanufactured:**

- Economy
- Longer Service Life Compared to Rebuilt

# Roadranger®

